

Notes on OPM's 2017 Sex Offenders Recidivism Study

Presented to the CT Sentencing Commission, May 25, 2017

**Ivan Kuzyk
Criminal Justice Division
CT OPM**

FINDINGS

- *Sex offenders are not a homogenous group; their crimes and motivations vary considerably as does the risk they present.*
- *Almost 40% of offenders charged with a sex crime are not convicted for a sex crime.*
- *Some sex offenders have significant criminal histories in addition to their sex-offense histories. For other sex offenders, their criminality is almost exclusively centered around sexual crimes.*

FINDINGS

- *Unlike other crimes, the number of offenders who are willing or capable of committing a sexual offense appears to approach a defined limit within the general prison population.*
- *In terms of general recidivism, sex offenders exhibit slightly lower rates of recidivism than non-sex-offenders.*
- *Sex offenders exhibit higher rates for committing new sexual offenses than non-sex offenders.*

FINDINGS

- ***In terms of sexual recidivism, this study's findings closely mirrored findings in OPM's 2012 sex offender study.***

2011 cohort - Recidivism rates for new sexual offenses

Group	Cohort size	Arrest rate, new sex offense, non-violent	Arrest rate, new sex offense, violent	Conviction rate, new sex offense, non-violent	Conviction rate, new sex offense, violent	Incarceration rate, non-violent sex offense	Incarceration rate, non-violent sex offense
Non-sex offender	9,930	1.2%	0.9%	0.5%	0.3%	0.4%	0.3%
Sex offender (1 criteria)	1,565	4.2%	2.3%	2.7%	1.3%	2.7%	1.5%
Sex offender (all criteria)	684	4.1%	2.2%	2.9%	1.2%	3.1%	1.8%

Note: Arrest and conviction data: CSSD, Sentence data: DOC - inconsistencies could not be resolved

2011 cohort - Recidivism rates for new sexual offenses

Prior arrest for	Cohort size	Arrest rate, new sex offense, non-violent	Arrest rate, new sex offense, violent	Conviction rate, new sex offense, non-violent	Conviction rate, new sex offense, violent	Incarceration rate, non-violent sex offense	Incarceration rate, non-violent sex offense
Sex assault 1	527	2.9%	2.1%	2.1%	1.3%	1.9%	1.3%
Sex assault 2	394	3.8%	2.5%	2.3%	1.3%	3.6%	2.5%
Sex assault 4	377	3.4%	1.9%	2.1%	1.3%	2.7%	1.9%
Illegal sex. Contact	227	4.8%	4.8%	2.6%	2.6%	2.6%	2.6%
Public indecency	118	13.6%	5.9%	10.2%	4.2%	10.2%	4.2%
Patron. prostitute	81	6.2%	2.5%	4.9%	1.2%	2.5%	1.2%
Prost. Related	45	6.7%	0.0%	4.4%	0.0%	2.2%	0.0%
Child porn, possession	28	3.6%	0.0%	3.6%	0.0%	3.6%	0.0%

Note: Arrest and conviction data: CSSD, Sentence data: DOC - inconsistencies could not be resolved

SOME QUESTIONS

WHAT TO COUNT?

- General recidivism and
- Recidivism for new sexual offenses

WHO TO COUNT?

- Who is a sex offender?
- How will sex offenders be identified?
- What works with our population?

WHAT TO COUNT?

General Recidivism	Recidivism for new sexual offenses
New arrests New convictions Returns-to-prison New prison sentences First event within 5 years	New arrests for new sex offenses New convictions for new sex offenses New prison sentences for new sexual offenses Any event within 5 years
All offenses	Sexual offenses, violent and non-violent

2011 cohort: 11,495 sentenced, male offenders who were released or discharged from prison during 2011. Data and assistance was provided by CT DOC, CSSD and the Connection Inc.

WHO TO COUNT?

There is no average sex offender. The crimes sex offenders commit, the victims they choose, the degree of violence, coercion and manipulation they exhibit varies dramatically. So too does the risk they present to the general public.

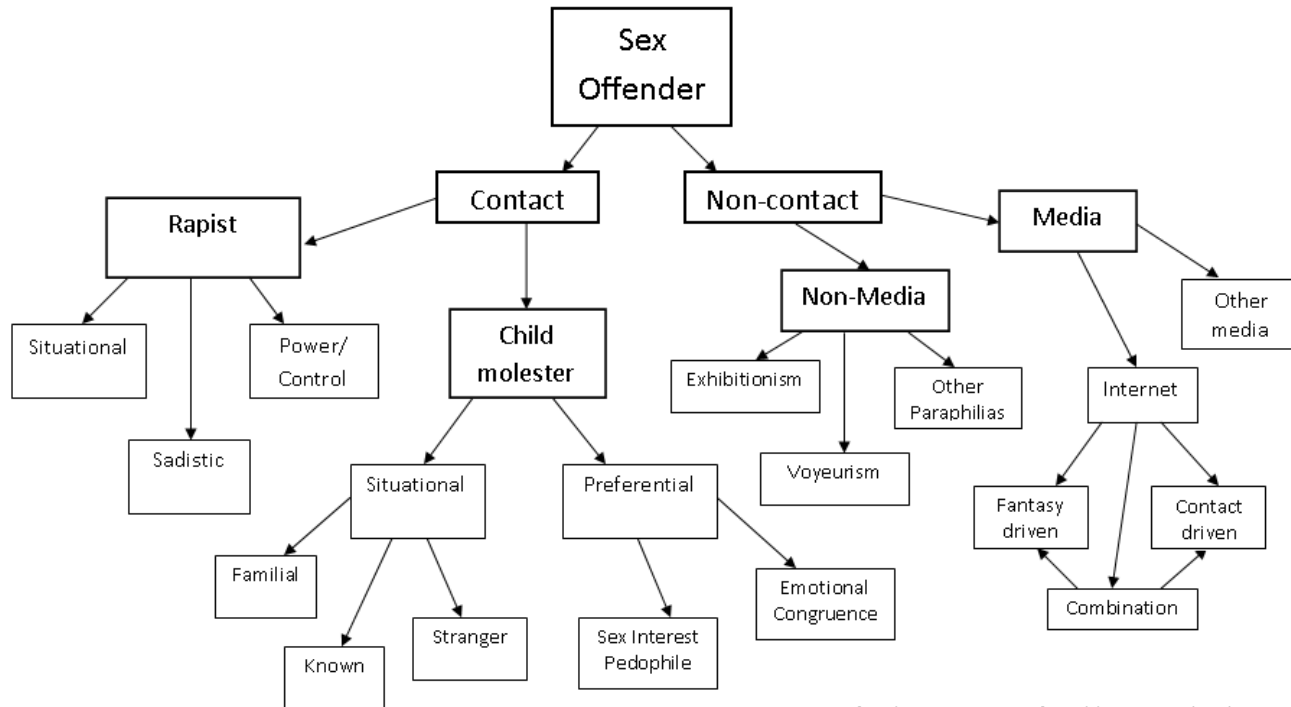


Chart produced by Dr. Randall Wallaøe, Center for the Treatment of Problem Sexual Behaviors

WHO TO COUNT?

In a 2012 study of sex offender recidivism, used OPM four criteria to identify sex offenders within a cohort of 14,398 male, sentenced prisoners who left prison during 2005.

1. A prior arrest for a sex crime (1,395)
2. A prior conviction for a sex offense (890)
3. Completion of a prison sentence for a sex offense (746), or
4. A DOC Sex Treatment Score of 2 through 5* (1,229)

In this study we have modified the criteria used to identify sex offenders within the release cohort.

** The Sex Treatment Score (STS) is a 5-point rating used for population management by the CT DOC. An STS of 1 indicates no issues. A 2 is assigned to non-contact sex offenders. A 3 indicates a contact sexual offense with one victim. A 4 indicates a contact offense with more than one victim. A score of 5 indicates a sex offense featuring gratuitous violence or sadism.*

WHO TO COUNT?

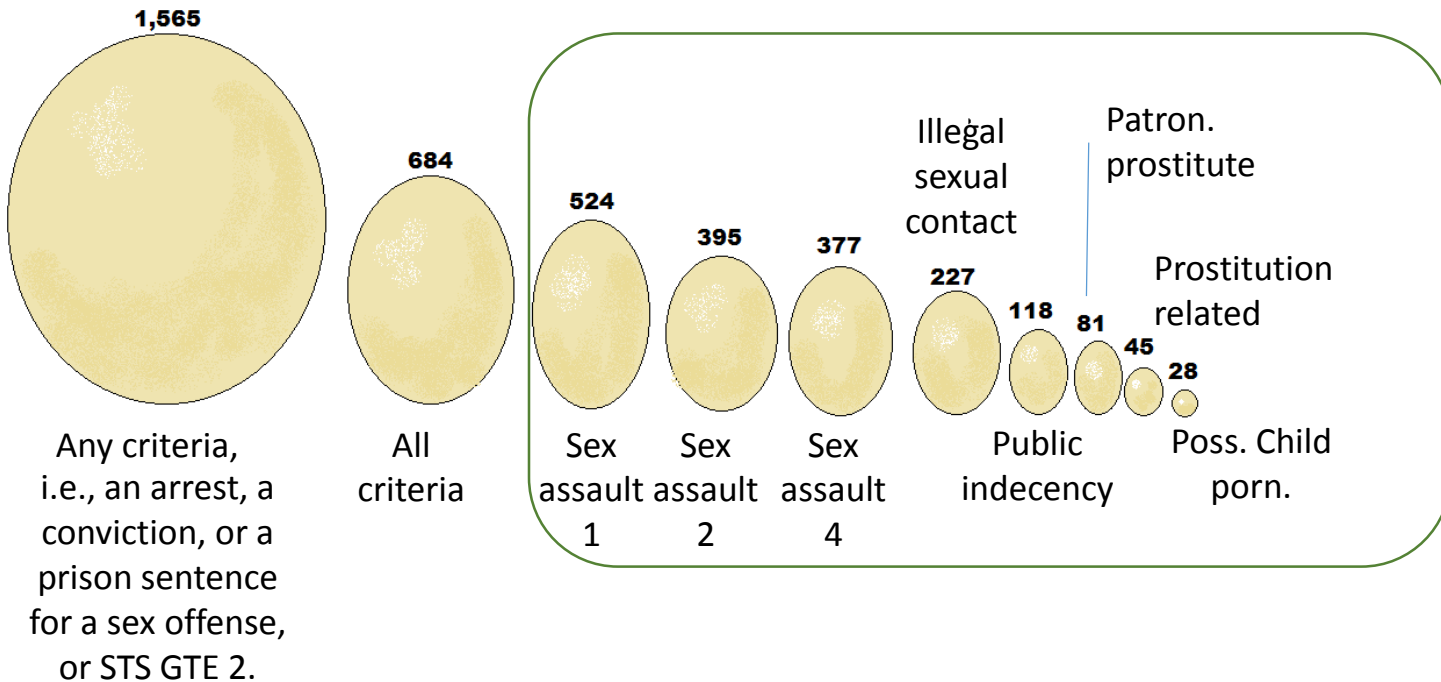
This study used 4 overlapping criteria to identify sex offenders within the cohort

This example, below, identifies an offender with an arrest history for a sex crime but no conviction or DOC sentence history for a sex offense. The offender's STS, however, is greater than 1. There were 251 offenders in the cohort who met these exact criteria.

Yes	No	
<input checked="" type="checkbox"/>	<input type="checkbox"/>	Arrest for a sex offense
<input type="checkbox"/>	<input checked="" type="checkbox"/>	Conviction for a sex offense
<input type="checkbox"/>	<input checked="" type="checkbox"/>	Sentenced to prison for a sex offense
<input checked="" type="checkbox"/>	<input type="checkbox"/>	Sex treatment score, 2 through 5

WHO TO COUNT?

In addition to the four criteria used to identify sex offenders within the 11,495-man cohort, the study also included – for comparative purposes – breakouts of offenders who had ever been arrested for one of the following offenses:



Pre-release histories

1,391 offenders out of the 11,495-man cohort had been arrested at least once and charged with a sexual offense prior to their 2011 release. Sexual assault 1 was the most common sexual offense charged at arrest.

Aggregated arrest charged

Offense group	Charges at arrest	Offenders (1,391)
Sex Assault 1	1,056	524
Sex Assault 2	891	394
Sex Assault 4	599	377
Illegal sexual contact	449	227
Sex Assault 3	289	179
Public indecency	221	118
Patronize prostitute	93	81
Chile porn poss.	69	28
Promote prost.	39	12
Voyeurism- related	38	7
Prostitution	33	33
Employ/entice minor	50	27
Total	3,827	

846 of these men were convicted for a sexual offense.

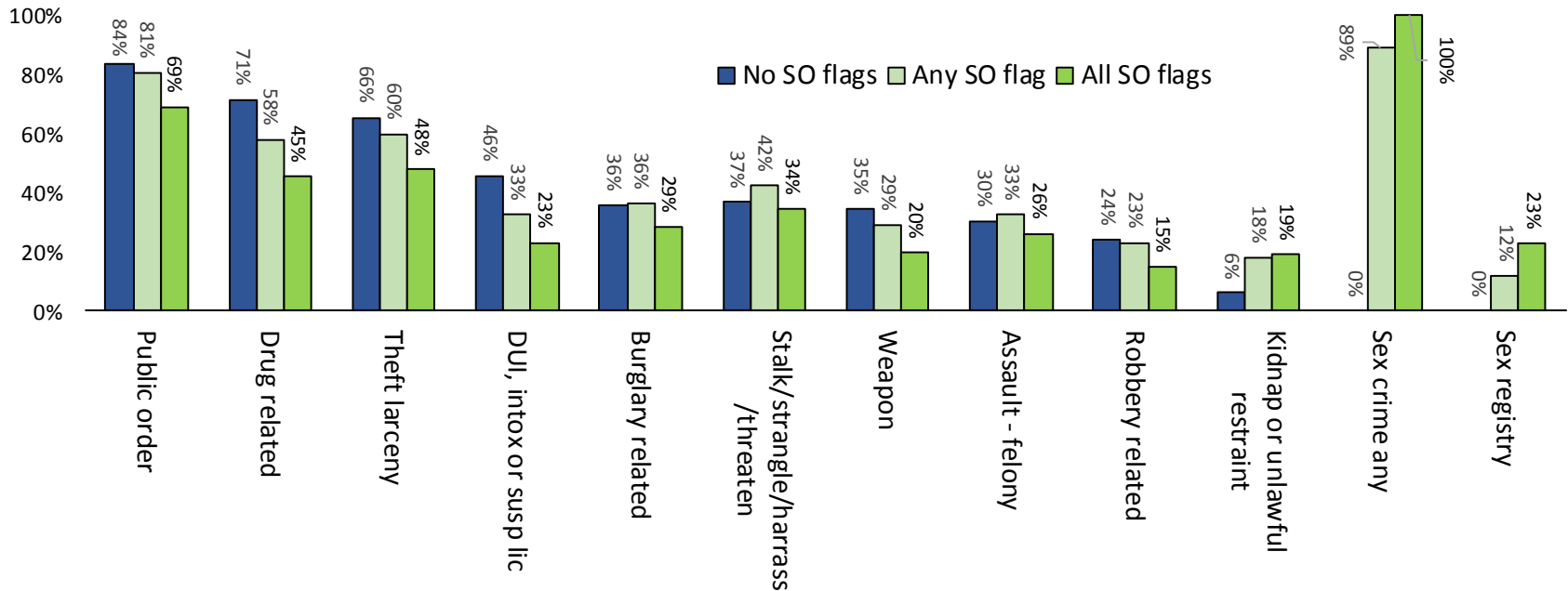
772 had served, or were serving, a prison for a sexual offense.

1,189 had a STS greater than 2.

Of the 3,827 charges for sexual offenses, filed at arrest, at least 767 were for crimes against minors.

Sex offenders and general criminality

Aggregated prior-arrest histories by sub-group



The chart shows the percentage of offenders who had been arrested for different types of crimes prior to their 2011 release from prison.

- **Dark Blue: 9,930 offenders with no history of a sexual crime**
- **Pale green: 1,565 offenders with at least one flag indicating a sex offense**
- **White: 684 offenders with all four sex-offense criteria**

Sex offenders and general criminality

Aggregated prior-arrest histories by sub-group

	Public order	Drug related	Theft larceny	DUI, intox or susp lic	Stalk/strangle/harass/threaten	Burglary related
No SO flags	84%	71%	66%	46%	37%	36%
Any SO flag	81%	58%	60%	33%	42%	36%
All SO flags	69%	45%	48%	23%	34%	29%

	Weapon	Assault - felony	Robbery related	Kidnap or unlawful restraint	Sex crime any	Sex registry
No SO flags	35%	30%	24%	6%	0%	0%
Any SO flag	29%	33%	23%	18%	89%	12%
All SO flags	20%	26%	15%	19%	100%	23%

- The non-sex-offender group (9,930 men) had the highest rates of arrests for **6 of the 12** crime types.
- The 1,565-man sex-offender group exhibited the highest arrest rates for **stalking/strangling/harassment and felony assaults**. This group tied with the non-sex group for percentage arrests from **burglary**.
- The 684 – all flags group – had the highest rates for **kidnapping/unlawful restraint, sex offenses** and sex registry offenses.

Sex offenders and general criminality

Aggregated prior-arrest and sentence histories by sub-group

Prior arrests	Public order	Drug related	Theft larceny	DUI, intox or susp lic	Stalk/strangle/harr ass/threaten	Burglary related	Weapon	Assault - felony	Robbery related	Kidnap or unlawful restraint	Sex crime any	Sex registry
No SO flags	84%	71%	66%	46%	37%	36%	35%	30%	24%	6%	0%	0%
Any SO flag	81%	58%	60%	33%	42%	36%	29%	33%	23%	18%	89%	12%
All SO flags	69%	45%	48%	23%	34%	29%	20%	26%	15%	19%	100%	23%

Prior prison sentences served	Public order	Drug related	Theft larceny	DUI, intox or susp lic	Stalk/strangle/harr ass/threaten	Burglary related	Weapon	Assault - felony	Robbery related	Kidnap or unlawful restraint	Sex crime any	Sex registry
No SO flags	36%	47%	33%	30%	11%	20%	16%	13%	14%	1%	0%	0%
Any SO flag	41%	35%	32%	21%	13%	20%	11%	15%	13%	7%	49%	7%
All SO flags	31%	24%	22%	13%	10%	16%	5%	12%	8%	6%	99%	13%

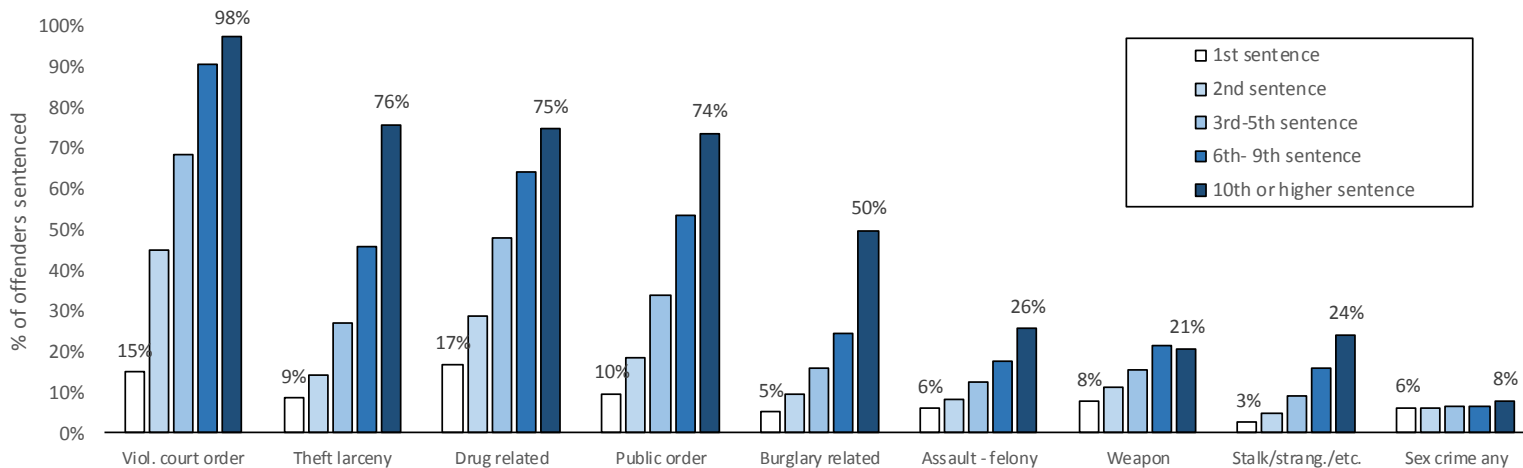
- ***The differences that were observed between groups in aggregated arrest histories generally carried through to the sentence history.***
- ***The any SO flag group was closely aligned to the No SO flag group for burglary and robbery related offenses. The any SO flag group had slightly higher rates than the non-sex group for felony assaults and much higher rates for kidnap and unlawful restraint.***

Sex offenders and general criminality

The 11,495-man cohort was segmented into roughly equal sized groups based on their DOC Sentence ID. Each offender's Sentence ID reflects the number of prison sentences, by docket, they've served.

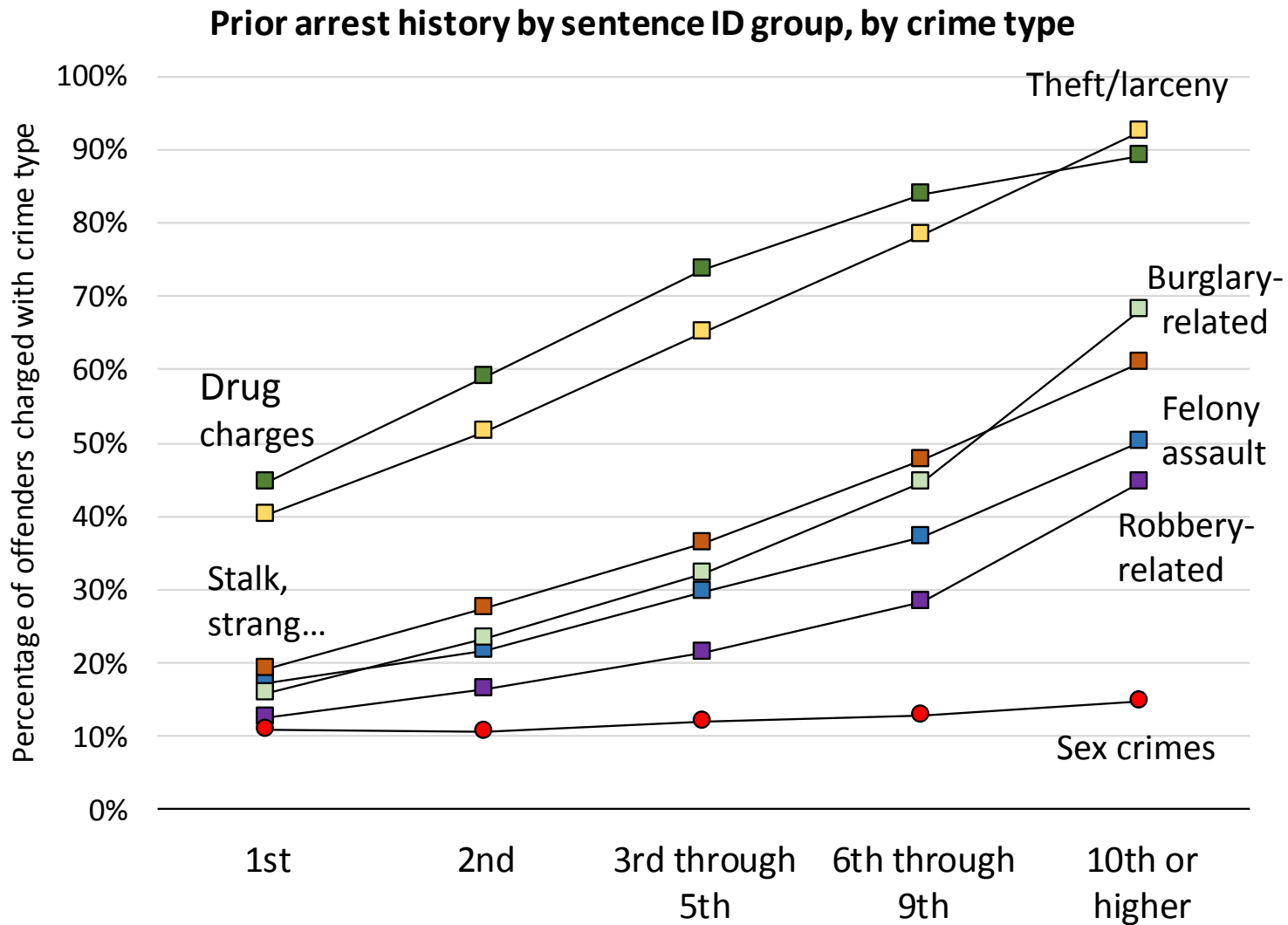
* Sentences completed in 2011					
Total cohort	First	Second	3rd to 5th	6th to 9th	10th or higher
11,495	2,611	1,653	3,100	2,122	2,009
100%	23%	14%	27%	18%	17%

Aggregated prior-prison sentence histories by Sentence ID

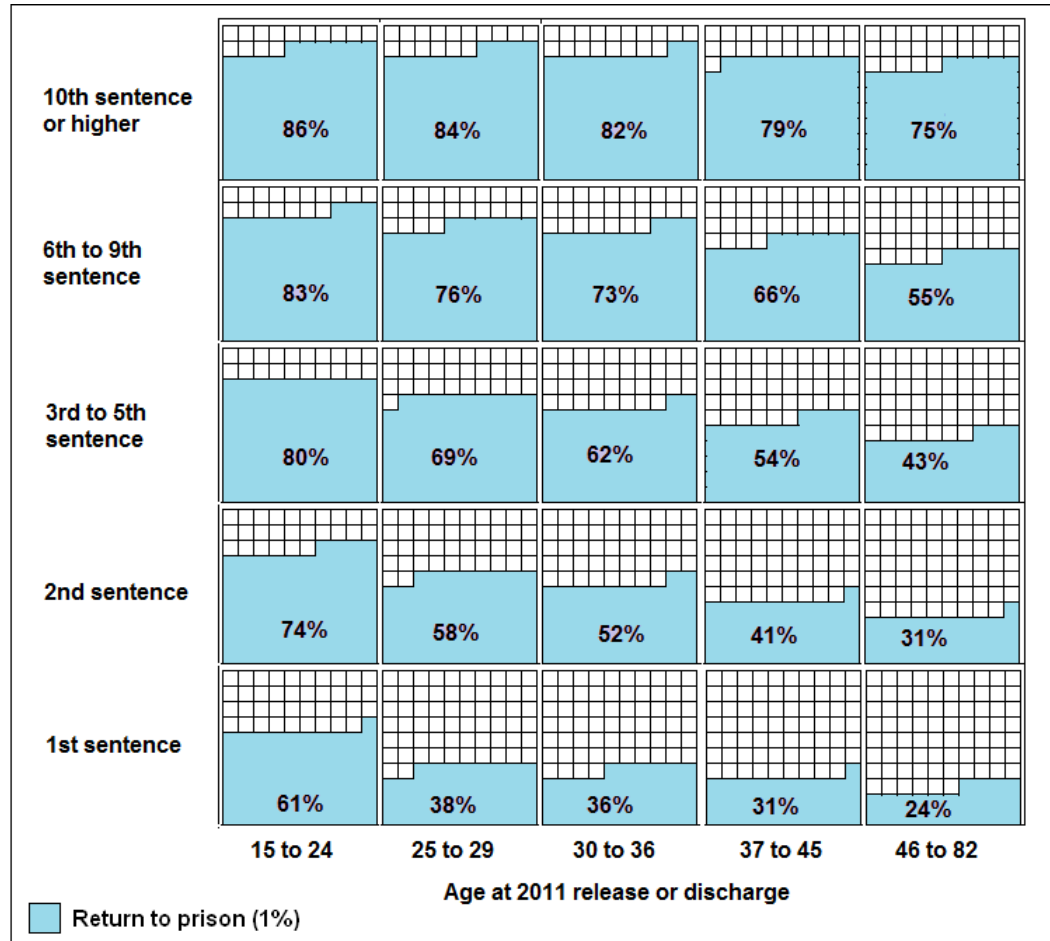


Observe how as an offender's Sentence ID grows, so too does the likelihood that the offender will serve a prison sentence for a wider range of crimes.

Sex offenders and general criminality



General recidivism – a reminder

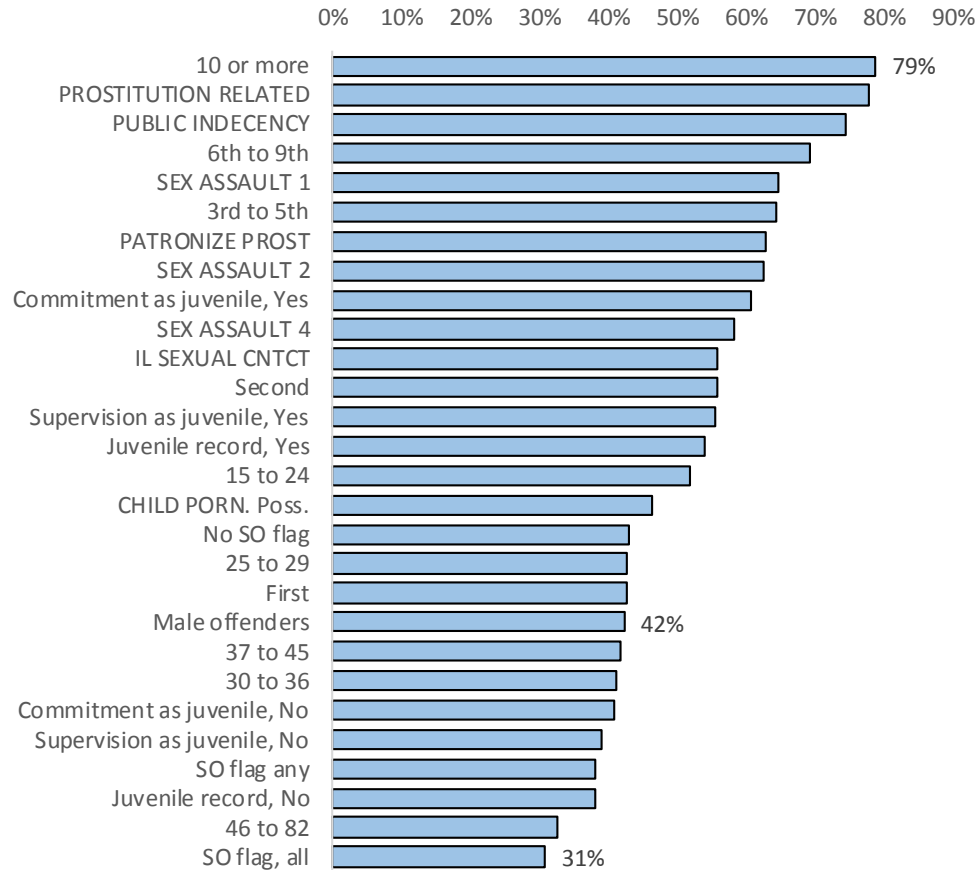


If there are no average prisoners, it is not practical to think in terms of an average recidivism rate.

I.A. Kuzyk

General recidivism – returns to prison

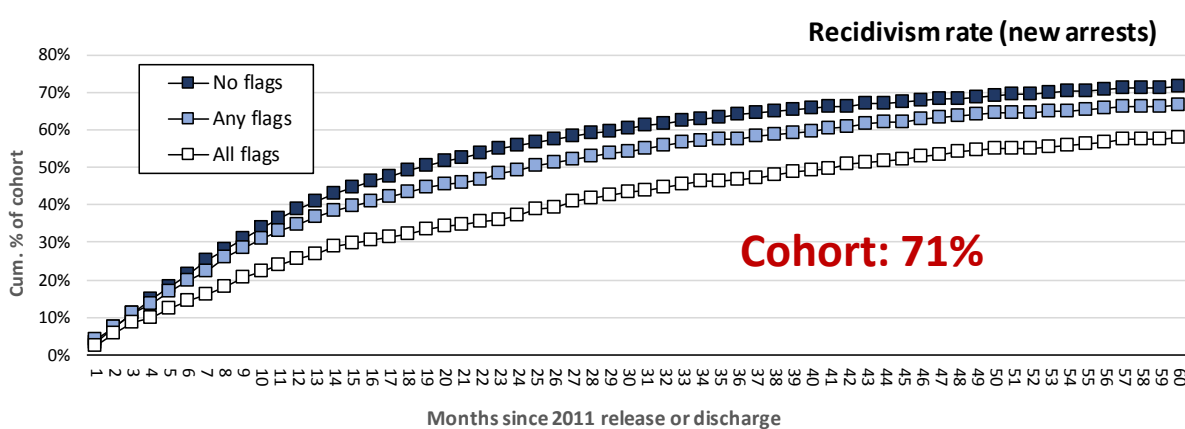
5-year return to prison rate, 2011 male cohort



If there are no average prisoners, it is not practical to think in terms of an average recidivism rate.

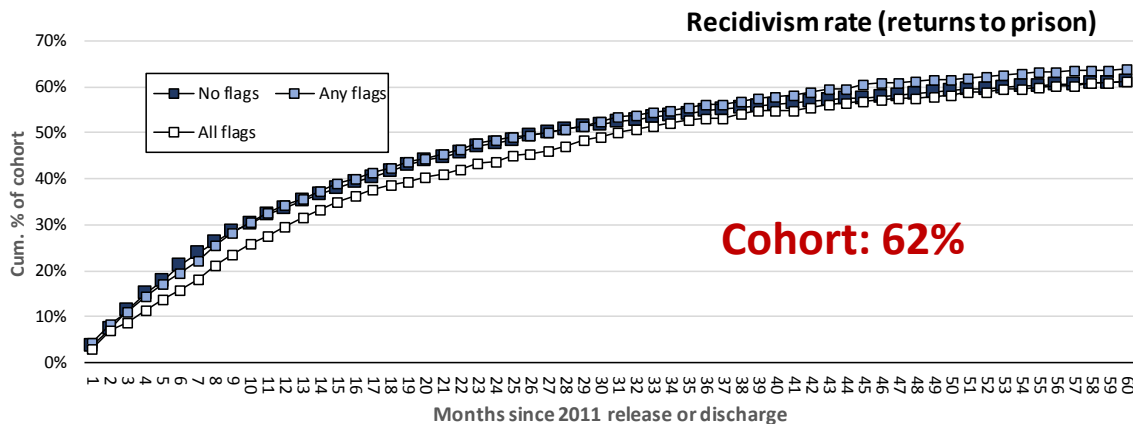
I.A. Kuzyk

General recidivism - arrests and RTP



Recidivism rate, new arrests

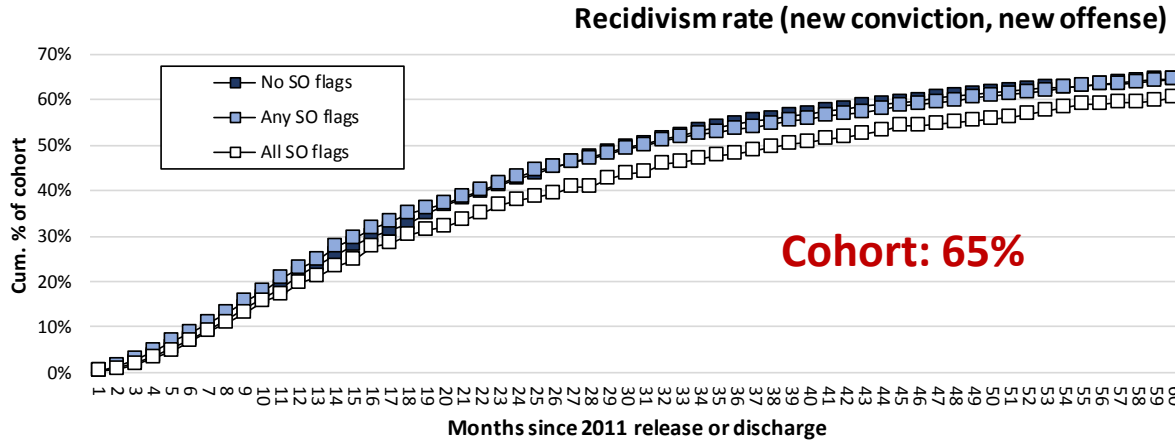
Months from release	No SO flags	Any SO flags	All SO flags
6	22%	20%	14%
12	39%	35%	26%
18	49%	44%	32%
24	56%	49%	37%
30	60%	54%	43%
36	64%	58%	47%
42	66%	61%	51%
48	69%	64%	54%
54	70%	65%	56%
60	72%	66%	58%



Recidivism rate, return to prison

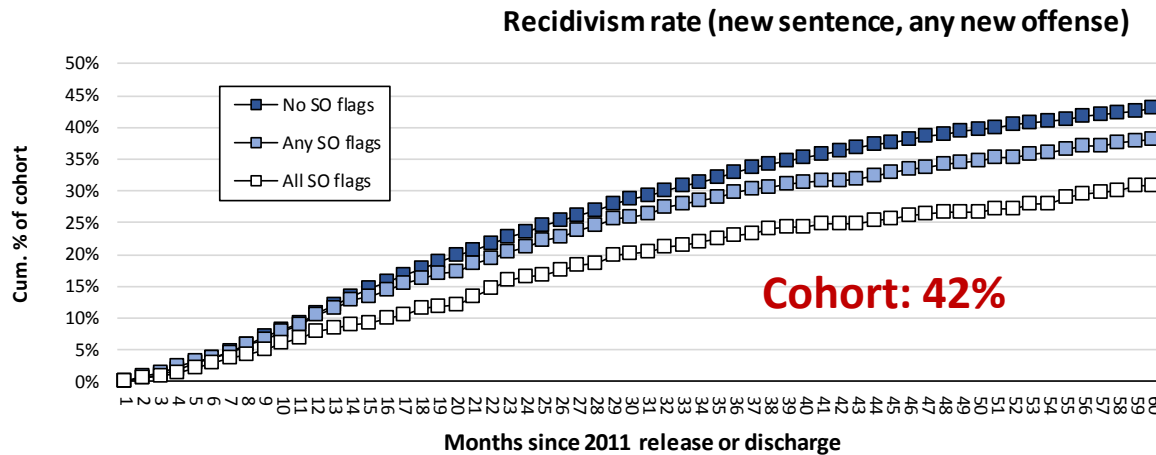
Months from release	No SO flags	Any SO flags	All SO flags
6	21%	19%	16%
12	34%	34%	30%
18	42%	43%	39%
24	48%	48%	44%
30	52%	53%	49%
36	55%	56%	53%
42	57%	59%	56%
48	59%	61%	58%
54	60%	63%	60%
60	61%	64%	61%

Gen. recidivism – conviction & prison



Recidivism rate, new conviction

Months from release	No SO flags	Any SO flags	All SO flags
6	7%	9%	7%
12	21%	23%	19%
18	33%	35%	30%
24	43%	43%	38%
30	49%	49%	44%
36	55%	54%	48%
42	58%	57%	52%
48	61%	60%	55%
54	63%	63%	58%
60	65%	64%	61%



Recidivism rate, new sentence

Months from release	No SO flags	Any SO flags	All SO flags
6	4%	4%	3%
12	11%	11%	8%
18	18%	16%	11%
24	24%	21%	16%
30	29%	26%	20%
36	33%	30%	23%
42	36%	32%	25%
48	39%	34%	27%
54	41%	36%	28%
60	43%	38%	31%

Gen. recidivism – conviction & prison

Cumulative new sentence rates, by group w/in 5 years of release from prison

	Entire cohort	No SO flag	Any SO flag	All SO flags	SEX ASSAULT 1	SEX ASSAULT 2	SEX ASSAULT 4	ILL. SEX. CONTACT	PUB INDECEN CY	PAT. PROSTITUTE	PROST. RELATED	POSS. CHILD PORN
Cohort size	11,495	9,930	1,565	684	524	394	377	227	118	81	45	28
Recidivism rates	42%	43%	38%	31%	35%	36%	30%	29%	55%	46%	56%	7%

Cumulative new sentence rates, by group and crime type w/in 5 years of release from prison

	Cohort size	Public order	Drug related	Theft, Larceny	DUI, Intox	Stalk threat harass	Burglary related	Weapon	Assault-felony	Robbery related	Kidnap-unlawful restraint	Sex crime	Sex registry
Entire cohort	11,495	11%	12%	10%	5%	4%	5%	4%	3%	3%	0%	1%	0%
No SO flag	9,930	11%	13%	10%	5%	4%	5%	4%	3%	3%	0%	0%	0%
Any SO flag	1,565	11%	8%	9%	3%	4%	4%	2%	3%	3%	1%	3%	3%
All SO flags	684	8%	6%	5%	2%	3%	1%	1%	1%	2%	1%	3%	5%
SEX ASSAULT 1	524	10%	8%	7%	2%	5%	3%	2%	2%	3%	1%	2%	4%
SEX ASSAULT 2	394	10%	8%	7%	3%	4%	5%	2%	2%	2%	1%	4%	3%
SEX ASSAULT 4	377	10%	5%	4%	2%	3%	3%	2%	2%	1%	0%	3%	3%
ILL. SEX. CONTACT	227	7%	5%	4%	4%	4%	2%	2%	2%	1%	0%	3%	4%
PUB INDECENCY	118	21%	4%	14%	1%	8%	4%	3%	7%	3%	3%	10%	3%
PAT. PROSTITUTE	81	11%	7%	15%	5%	1%	9%	1%	4%	0%	0%	2%	1%
PROST. RELATED	45	9%	16%	36%	0%	0%	9%	2%	4%	7%	0%	2%	0%
POSS. CHILD PORN	28	0%	0%	0%	0%	0%	0%	0%	0%	0%	0%	4%	0%

Recidivism – new sexual offenses

New Arrests for Sex Offenses within 5 years of release from prison

	Cohort size	Offenders arrested for all new sexual offenses	Arrest rate for all sexual offenses	Offenders arrests for violent* sexual offenses	Arrest rate for violent* sexual offenses
Total cohort	11,495	188	1.6%	122	1.1%
No SO flag	9,930	123	1.2% ★	86	0.9% ★
Any SO flag	1,565	65	4.2% ★	36	2.3% ★
All SO flags	678	28	4.1%	15	2.2%
Prior arrest charge history					
Sex assault 1	524	15	2.9%	11	2.1%
Sex assault 2	394	15	3.8%	10	2.5%
Sex assault 4	377	13	3.4%	7	1.9%
Illegal sex. contact	227	11	4.8% ★	11	4.8% ★
Public indecency	118	16	13.6% ★	7	5.9% ★
Patron. Prostitute	81	5	6.2%	2	2.5%
Prostitution related	45	3	6.7%	0	0.0%
Chile porn poss.	28	1	3.6%	0	0.0%

*** Violent sexual offenses do not include commercial sex crimes or morals charges.**

Recidivism – new sexual offenses

New Convictions for Sex Offenses within 5 years of release from prison

	Cohort size	Offenders convicted for new sexual offenses	Conviction rate for all sexual offenses	Offenders convicted for violent* sexual offenses	Conviction rate for violent* sexual offenses
Total cohort	11,495	87	0.8%	50	0.4%
No SO flag	9,930	45	0.5%	30	0.3%
Any SO flag	1,565	42	2.7% ★	20	1.3% ★
All SO flags	678	20	2.9% ★	8	1.2%
Prior arrest charge history					
Sex assault 1	524	11	2.1%	7	1.3%
Sex assault 2	394	9	2.3%	5	1.3%
Sex assault 4	377	8	2.1%	5	1.3%
Illegal sex. contact	227	6	2.6% ★	6	2.6% ★
Public indecency	118	12	10.2% ★	5	4.2% ★
Patron. Prostitute	81	4	4.9%	1	1.2%
Prostitution related	45	2	4.4%	0	0.0%
Chile porn poss.	28	1	3.6%	0	0.0%

*** Violent sexual offenses do not include commercial sex crimes or morals charges.**

Recidivism – new sexual offenses

New Prison Sentences for Sex Offenses within 5 years of release from prison

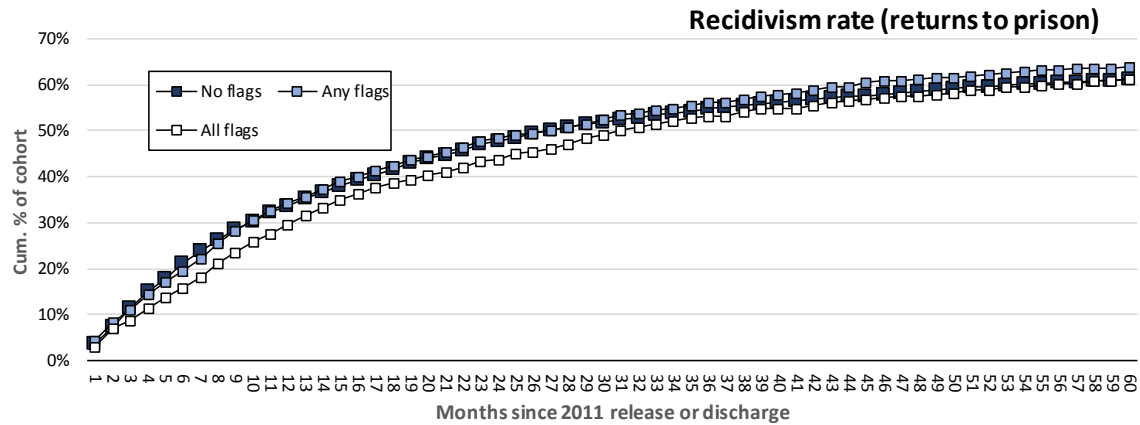
	Cohort size	Offenders sentenced to prison for new sexual offenses	Incarceration rate for all sexual offenses	Offenders sentenced to prison for violent* sexual offenses	Incarceration rate for violent* sexual offenses
Total cohort	11,495	78	0.7%	52	0.5%
No SO flag	9,930	35	0.4%	28	0.3%
Any SO flag	1,565	43	2.7%	24	1.5%
All SO flags	678	21	3.1% ★	12	1.8% ★
Prior arrest charge history					
Sex assault 1	524	10	1.9%	7	1.3%
Sex assault 2	394	14	3.6%	10	2.5%
Sex assault 4	377	10	2.7%	7	1.9%
Illegal sex. contact	227	6	2.6%	6	2.6%
Public indecency	118	12	10.2% ★	5	4.2% ★
Patron. Prostitute	81	2	2.5%	1	1.2%
Prostitution related	45	1	2.2%	0	0.0%
Chile porn poss.	28	1	3.6%	0	0.0%

*** Violent sexual offenses do not include commercial sex crimes or morals charges.**

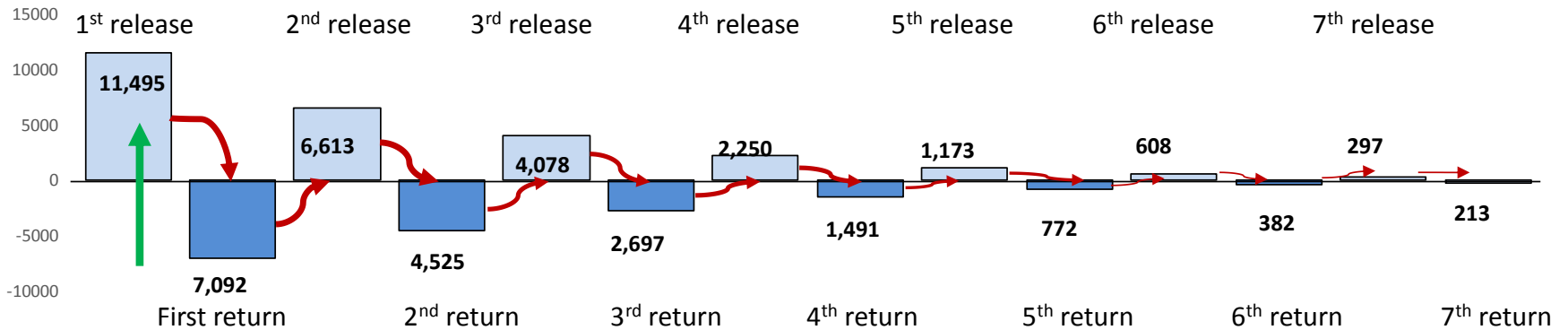
Although this study tracked offenders for 5 years, not every offender spent 5 years at liberty, where they were free to commit new offenses.

Many offenders spent a significant amount of the 5 years following their 2011 release in prison.

Recidivism often means more than one return to the system.



Offenders returns-to-prison over 5 years, out to the 7th return, 2011 cohort



Cumulative prison bed days used by offenders returning within 5 years

	Offender s in group	Offenders not returning to prison within 5 years	Offenders returning within 5 years	Total prison days post return	Average prison days per returnee
2011 male cohort	11,495	4,405	7,090	3,679,579	519.0
No SO flags	9,930	3,842	6,088	3,088,160	507.3
Any SO flags	1,565	563	1,002	591,419	590.2
All SO flags	684	265	419	264,501	631.3
Arrest charges prior to 2011 release					
Sex assault 1	524	184	340	217,875	640.8
Sex assault 2	394	147	247	157,781	638.8
Sex assault 4	377	158	219	127,304	581.3
Ill sex contsct	227	100	127	77,579	610.9
Public indecency	118	31	87	47,255	543.2
Patron. prost	81	30	51	21,867	428.8
Prost. related	45	10	35	16,307	465.9
Child porn poss.	28	15	13	4,456	342.8

High rates of incapacitation due to incarceration during the 5-year study window may contribute to the low, overall rates of recidivism for sexual offenses.