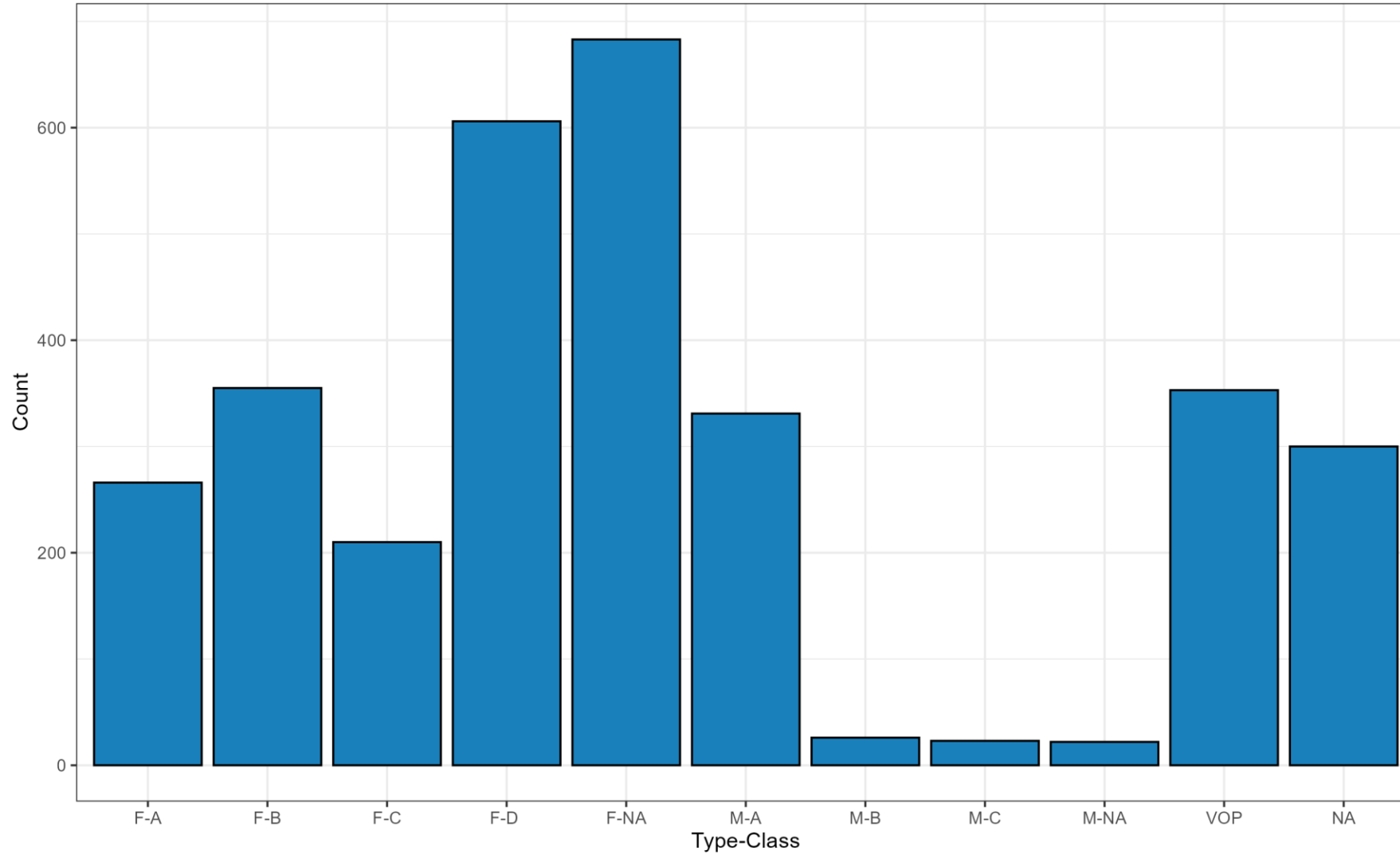

Open DOC Pretrial Data Snapshot: November 4, 2025

MATTHEW HONO, IMRP



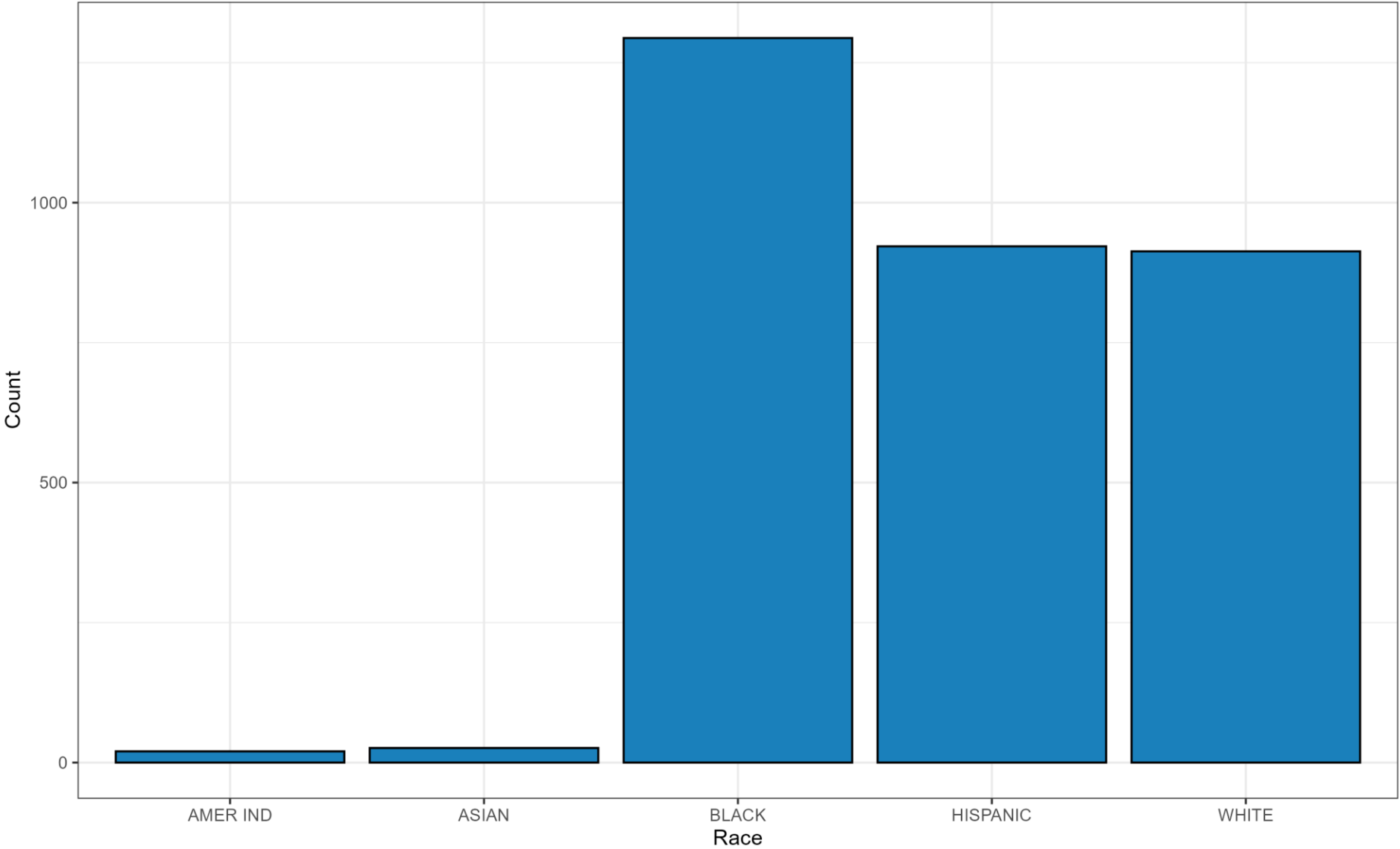
Count of Unique Individuals in DOC Custody by Type Class of Controlling Offense
Pretrial Inmates in DOC Custody on November 4th, 2025



Data Source: data.ct.gov (as of November 4, 2025).
Excludes detention in hospitals, mental health facilities, and detainers.
(N = 3175).

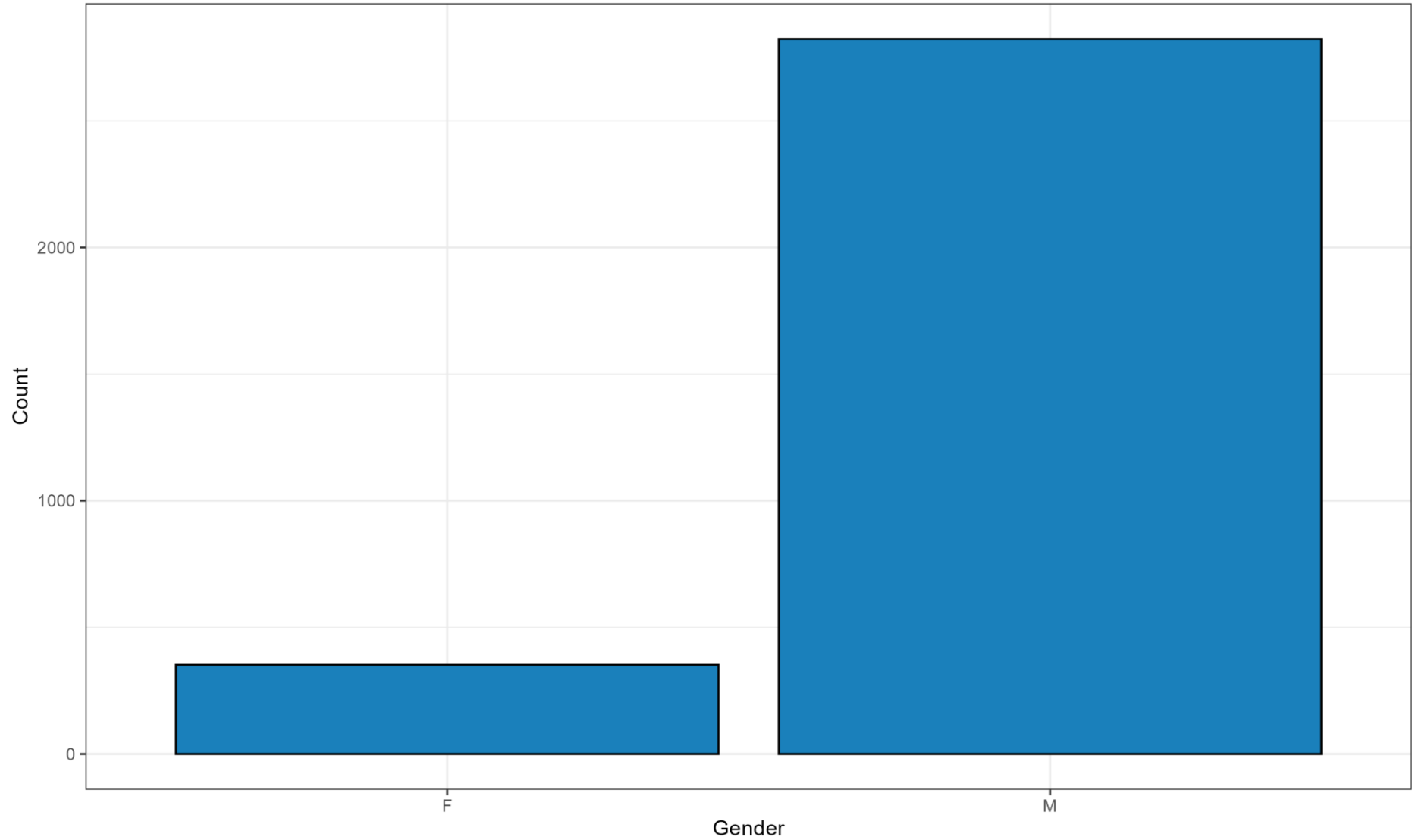
- Note: "Controlling Offense" may not be the most "severe" charge the defendant is facing. It is the charge at the top of the mittimus at the time of admissions.

Individuals in DOC Custody by Race
Pretrial Inmates in DOC Custody on November 4th, 2025

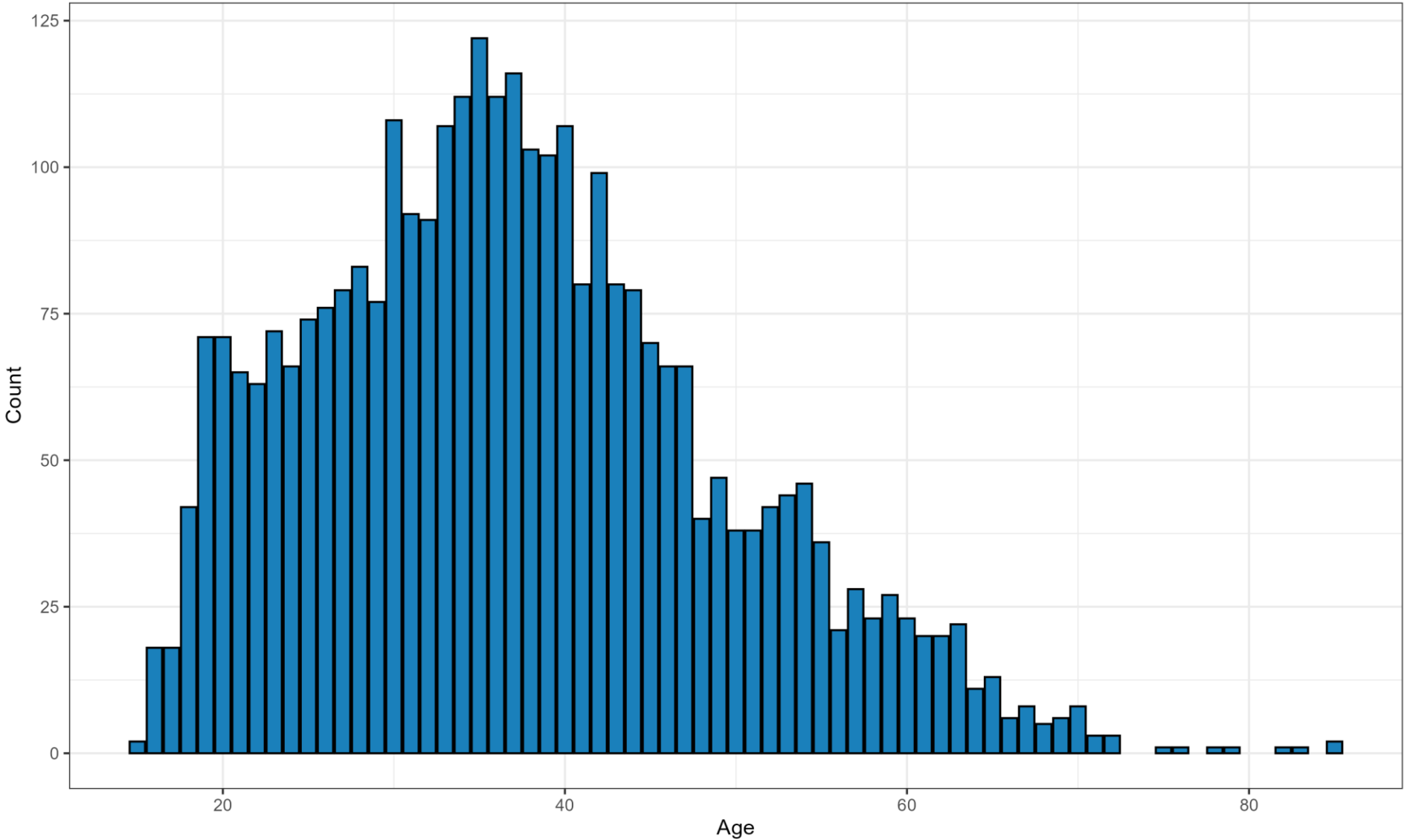


Data Source: data.ct.gov (as of November 4, 2025).
Excludes detention in hospitals, mental health facilities, and detainees.
(N = 3175).

Individuals in DOC Custody by Gender
Pretrial Inmates in DOC Custody on November 4th, 2025



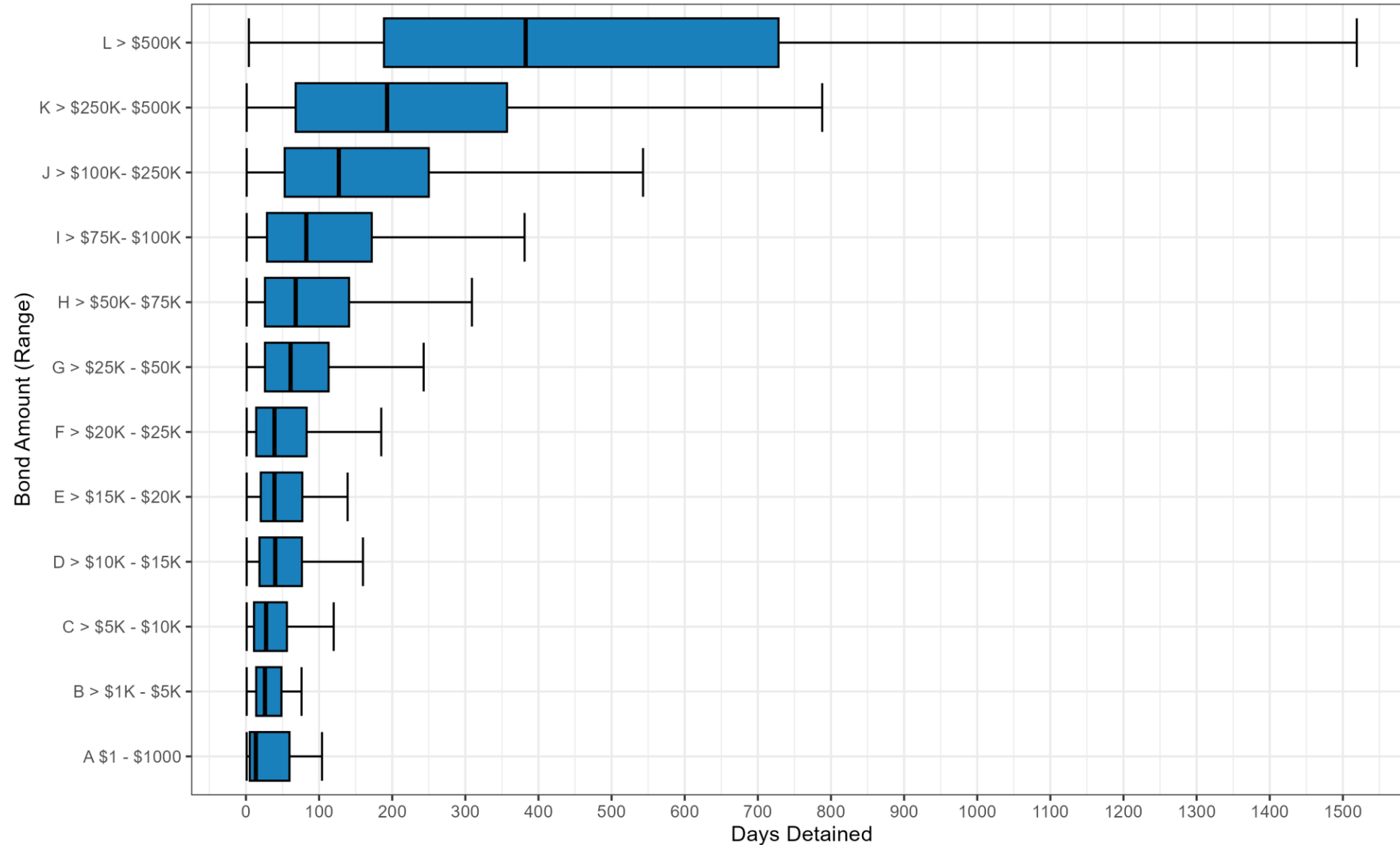
Individuals in DOC Custody by Age
Pretrial Inmates in DOC Custody on November 4th, 2025



Data Source: data.ct.gov (as of November 4, 2025).
Excludes detention in hospitals, mental health facilities, and detainees.
(N = 3175).

Days Detained in DOC Custody

Pretrial Inmates in DOC Custody on November 4th, 2025, by Bond Amount (Up to \$500K)



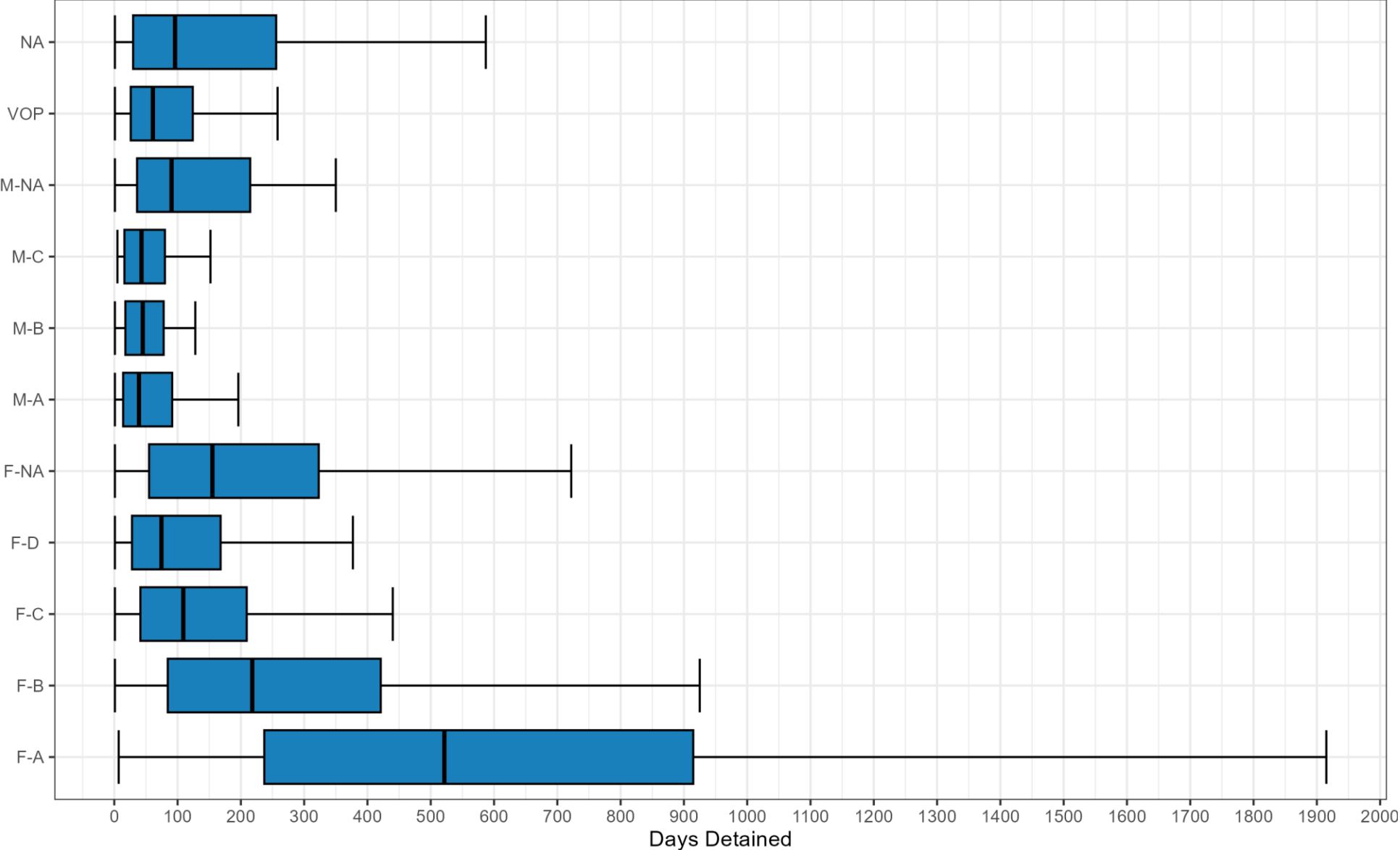
Data Source: data.ct.gov (as of November 4, 2025).
Excludes detention in hospitals, mental health facilities, and detainees.
(N = 3175). Vertical line denotes median. Whisker length = 1.5 of IQR.

Summary Table by Bond Amount Range (Nov. 4, 2025)

Bond Amount (Range)	Count	Percent of Inmates	Percent Male	Percent Non-White	Mean Age	Median Days Detained
A \$1 - \$1000	22	1%	86%	86%	41	14
B > \$1K - \$5K	95	3%	77%	71%	42	26
C > \$5K - \$10K	134	4%	78%	61%	40	28
D > \$10K - \$15K	99	3%	78%	65%	40	40
E > \$15K - \$20K	78	2%	82%	55%	41	39
F > \$20K - \$25K	128	4%	80%	59%	40	39
G > \$25K - \$50K	337	11%	83%	62%	40	61
H > \$50K- \$75K	276	9%	84%	67%	38	68
I > \$75K- \$100K	244	8%	92%	64%	37	83
J > \$100K- \$250K	723	23%	92%	73%	37	127
K > \$250K- \$500K	455	14%	93%	79%	35	193
L > \$500K	584	19%	95%	81%	35	383

Days Detained in DOC Custody (Outliers Omitted)

Pretrial Inmates in DOC Custody on November 4th, 2025, by 'Controlling' OFFENSE Type-Class



Data Source: data.ct.gov (as of November 4, 2025).
Excludes detention in hospitals, mental health facilities, and detainees.
(N = 3175). Vertical line denotes median. Whisker length = 1.5 of IQR.

Top 5 M-A Offenses

Type Class	OFFENSE	Count	Percent of Total M-A Defendants
M-A	FAILURE TO APPEAR, SECOND DEGREE AM	82	25%
M-A	INTERFERING WITH AN OFFICER AM	63	19%
M-A	ASSAULT, THIRD DEGREE AM	48	15%
M-A	CRIMINAL TRESPASS, FIRST DEGREE AM	30	9%
M-A	THREATENING AM	28	8%

Top 5 F-D Offenses

Type Class	OFFENSE	Count	Percent of Total FD
F-D	CRIM VIOL OF PROTECTIVE ORDER DF	165	27%
F-D	FAILURE TO APPEAR, FIRST DEGREE DF	141	23%
F-D	BURGLARY, THIRD DEGREE DF	54	9%
F-D	STEALING A FIREARM DF	40	7%
F-D	LARCENY, THIRD DEGREE DF	27	4%

Summary Findings

- Most pretrial detainees' controlling offense is a felony.
 - For about 40% of pretrial detainees, the open DOC data does not clearly specify the type-class of the controlling offense (M-NA, F-NA, NA).
- Despite making up around 10% of the Connecticut population, blacks make up ~41% of the pretrial population.
 - Males make up ~89% of the pretrial population.
- Unsurprisingly, length of pretrial detention increases as bond amount and charge severity increase.
 - Of those detained on November 4th, 2025, M-A defendants were detained for a median of ~45 days and their stay in detention ranged from ~1- 200 days, excluding outliers.
 - For those detained on November 4th, 2025, with a bond less than \$10k, the median days detained was 26, ranging from 1-620 days (M= 46.1 days, SD = 65.5)
- According to the data, at most 52.5% of individuals whose bond is below \$5K have a felony controlling offense. On the other end of the spectrum, at least 6% of individuals whose bond is above \$500K have a misdemeanor controlling offense.
- The most common offense for M-A defendants was failure to appear 2nd, the most common offense for F-D was violation of conditional discharge.